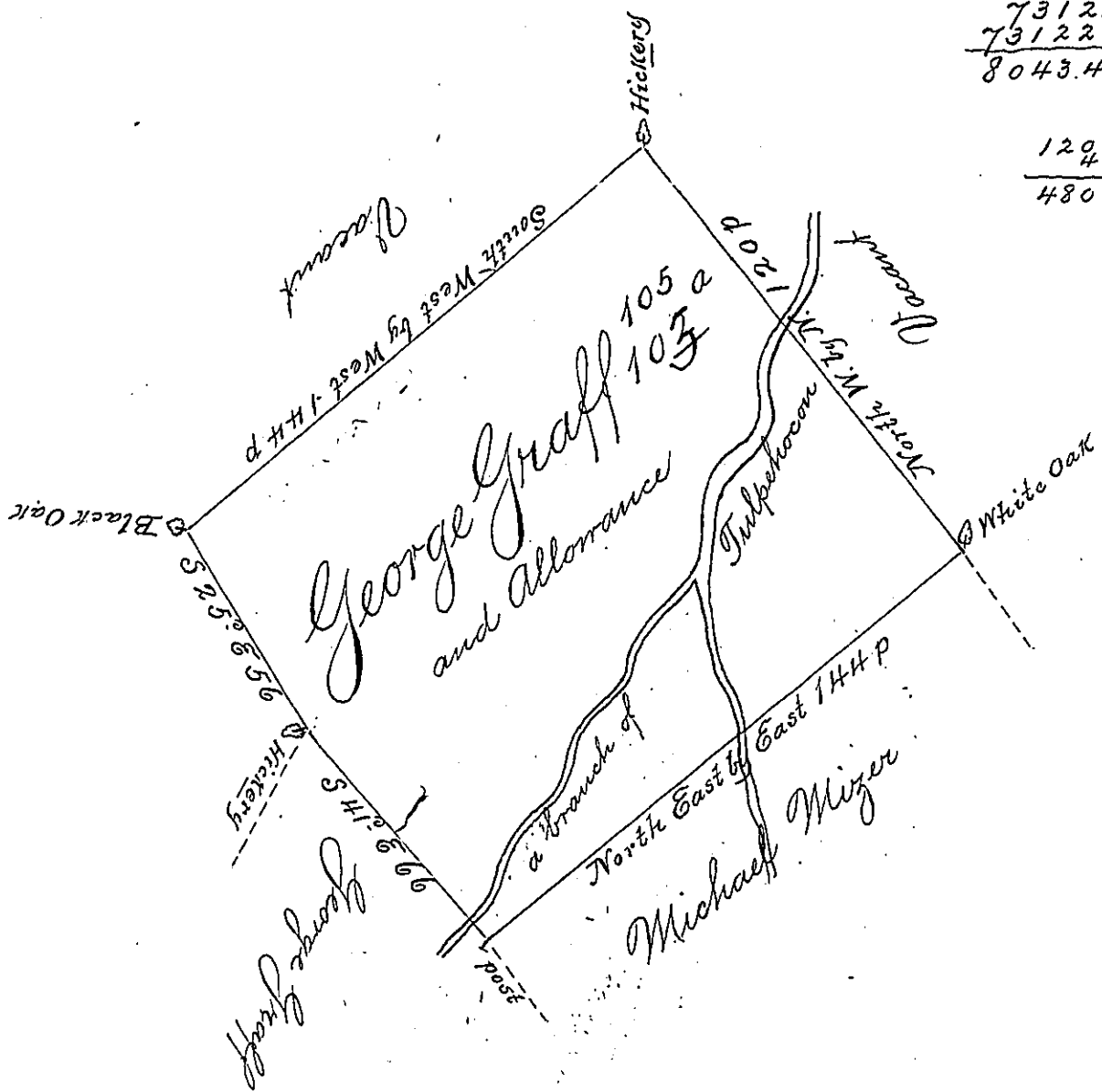


12184
66
73122
73122
8043.42

129	144
4	120
480	17280
	480
	17760
	111



In Pursuance of a Warrant from the Proprietaries dated the 25<sup>th</sup> day of October 1734 Survey'd to George Graff on the 10<sup>th</sup> day of November then next Ensuing The above described Tract of Land Situate on a branch of Tulpehocon Creek in the County of Lancaster Containing one hundred and ~~two~~<sup>five</sup> Acres and the Usual Allowance for Roads

The Warr<sup>t</sup> was for 200<sup>a</sup> in two Tracts  
of m<sup>ch</sup> this is one

J<sup>r</sup> Taylor

IN TESTIMONY that the above is a copy of the original remaining on file in the Department of Internal Affairs of Pennsylvania, made conformably to an Act of Assembly approved the 16th day of February, 1833, I have hereunto set my Hand and caused the Seal of said Department to be affixed at Harrisburg, this third day of December 1901.

James W. Fatta  
Secretary of Internal Affairs